

**CAUTION: KEEP OUT OF REACH OF CHILDREN
FOR ANIMAL TREATMENT ONLY
READ SAFETY DIRECTIONS**



EPRISHIELD

(Eprinomectin) POUR-ON

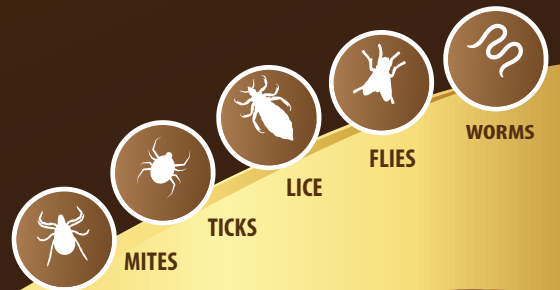
FOR BEEF & DAIRY CATTLE

ACTIVE CONSTITUENT: 5 mg/mL EPRINOMECTIN

For the treatment and control of internal and external parasites of beef and dairy cattle and internal parasites of deer.

For the treatment and control of gastrointestinal roundworms (including inhibited immature *Ostertagia ostertagi*) and lungworm in cattle. For sucking and biting lice, sarcoptic and chorioptic mange mites and buffalo fly in beef and dairy cattle. For aids in control of cattle tick (*Rhipicephalus microplus*). For the treatment and control of gastrointestinal roundworms and lungworm in deer.

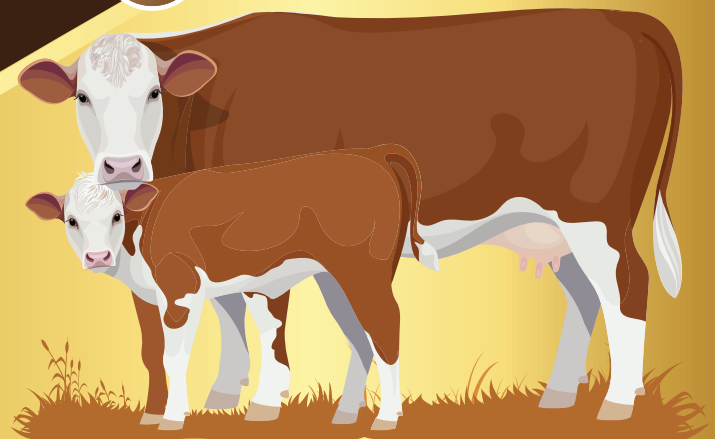
DO NOT APPLY TO AREAS OF THE BACKLINE COVERED WITH MUD OR MANURE. THIS PRODUCT IS FOR APPLICATION TO SKIN SURFACE ONLY, DO NOT GIVE ORALLY OR BY INJECTION.



Net 20L



AGRO-ALLIANCE
(AUSTRALIA) PTY LTD
A.B.N. 11 130 864 603



EPRISHIELD POUR-ON FOR BEEF AND DAIRY CATTLE

Directions for Use:

Restrictions: FOR EXTERNAL USE ONLY.

This product is formulated only for pour-on application to cattle and deer; do not use in other species.

Dosage and Administration:

A representative sample of animals should be weighed with either scales or a weighband. Dose the mob according to the heaviest animal by liveweight in the group (cows, bulls, calves, heifers, hinds, stags, fawns, etc). Do not underdose. Where there is a large variation in size within the group, draft into two or more lines based on bodyweight, to avoid excessive overdosing.

This product is formulated only for pour-on application to cattle and deer; do not use in other species. The formulation should be applied along the topline in a narrow strip extending from the withers to the tailhead. The dose rate is 1mL for each 10kg of liveweight.

Liveweight (kg)	Dose Volume (mL)
Up to 50	5
51 - 75	7.5
76 - 100	10
101 - 125	12.5
126 - 150	15
151 - 175	17.5
176 - 200	20
201 - 250	25
251 - 300	30
301 - 350	35
351 - 400	40
401 - 450	45
451 - 500	50
501 - 550	55
551 - 600	60
601 - 650	65

Heavier animals (e.g.: mature bulls) should receive an additional 5 mL for each 50kg over 650kg. Consult your veterinarian for assistance in the diagnosis, treatment and control of parasitism.

EPRISHIELD (EPINOMECTIN) POUR-ON FOR BEEF AND CATTLE applied at the recommended dose volume of 1mL/10kg liveweight to achieve a dose rate of 500µg eprinomectin/kg is indicated for the effective treatment and control of harmful internal parasites, lice, mites, buffalo fly and ticks.

EPRISHIELD (EPINOMECTIN) POUR-ON FOR BEEF AND CATTLE contains eprinomectin, a member of the macrocyclic lactone family of drenches. It is effective against eprinomectin-sensitive strains of the internal parasites. Resistance may develop to any drench.

General Directions:

EPRISHIELD (EPINOMECTIN) POUR-ON FOR BEEF AND DAIRY CATTLE delivers internal and external parasite control in one low volume application.

EPRISHIELD (EPINOMECTIN) POUR-ON FOR BEEF AND DAIRY CATTLE contains Eprinomectin, a member of the macrocyclic lactone family of drenches. It is effective against eprinomectin sensitive strains of internal parasites. Resistance can develop to any drench.

SAFETY:

Studies have demonstrated a wide safety margin. Five times the recommended use level had no adverse effects on cattle or deer. Three times the recommended use level had no adverse effect on the breeding performance of cows and bulls.

NOTE TO USER:

Rainfall before or after treatment will not affect the efficacy of EPRISHIELD POUR-ON.

Withholding Periods: Cattle Milk - Zero (0) days

Cattle Meat/Deer Meat - Zero (0) days.

MILK: DO NOT USE on ewes which are producing or may in the future produce milk that may be used or processed for human consumption.

CATTLE - Gastrointestinal Roundworms:

Parasites	Adults	Immatures	Inhibited L4
Ostertagia ostertagi - small brown stomach worm	•	•	•
O.lyrata - brown stomach worm	•		
Ostertagia spp.	•	•	
Haemonchus placei - barbers pole worm	•	•	
Trichostrongylus axei - stomach hair worm	•	•	
T.colubriformis - intestinal hair worm	•	•	
Trichostrongylus spp.	•	•	
Cooperia spp. - small intestinal worm	•	•	•
C.oncophora	•	•	
C.pectinata	•	•	
C.sumabada	•	•	
Oesophagostomum radiatum - nodule worm	•	•	
Oesophagostomum spp.	•	•	
Nematodirus helvetianus - thin necked intestinal worm	•	•	
Bunostomum phlebotomum - hookworm	•	•	
Trichuris spp. - whip worm	•		

Lungworm:

Parasites	Adults	Immatures	Inhibited L4
Dictyocaulus viviparus	•	•	

Sucking and Biting Lice:

Linognathus vituli
Hematopinus eurysternus
Bovicola (Damalinia) bovis
Solenopotes capillatus

Buffalo Fly:

Haematobia irritans exigua
When used as directed, EPRISHIELD POUR-ON also aids in control of:

Mites:

Chorioptes bovis
Sarcoptes scabiei var. bovis

Cattle Tick:

Rhipicephalus microplus
(Not recommended for use in strategic tick control programs)

PERSISTENT ACTIVITY IN CATTLE:

EPRISHIELD POUR-ON when given at the recommended dosage of 1mL/10kg liveweight controls infections with:

Parasite*	Prolonged Activity
Ostertagia spp.	Up to 28 days
Cooperia spp.	Up to 28 days
Dictyocaulus viviparus	28 days
Oesophagostomum radiatum	Up to 28 days
Nematodirus helvetianus	Up to 28 days
Haemonchus placei	21 days
Trichostrongylus spp.	21 days

*The following parasite species are included within each of the relevant genera: *Ostertagia ostertagi*, *O.leptospicularis*, *O.lyrata*, *Cooperia oncophora*, *C.punctata*, *C.sumabada*, *Trichostrongylus axei*, *T.colubriformis*.

DEER: Gastrointestinal roundworms -

Parasites	Adults	Inhibited L4
Ostertagia - type spp.	•	
Trichostrongylus spp.	•	•
Mazamastrongylus spp.	•	
Oesophagostomum spp.	•	

*Includes *O.mossi/dikmansii*, *O.lyrata*, *O.leptospicularis*, *Spiculopteria piculoptera*, *Sp.asymmetrica* and *Apteragia quadrispiculata*.

Lungworms:

Parasites	Adults	Inhibited L4
Dictyocaulus viviparus	•	•

For best results EPRISHIELD (EPINOMECTIN) POUR-ON FOR BEEF AND CATTLE should be part of a total parasite control program including internal and external parasites. Resistance may develop to any drench. Consult your veterinarian for a complete parasite control program.

Trade Advice: EXPORT SLAUGHTER INTERVAL (ESI): Zero (0) days.

Before using this product, confirm the current ESI from the APVMA website (www.apvma.gov.au/residues).

Safety Directions: Poisonous if swallowed.

Will irritate the eyes. Avoid contact with eyes. Repeated exposure may cause allergic disorders. After use and before eating, drinking or smoking, wash hands, arms and face thoroughly with soap and water.

First Aid Instructions: If poisoning occurs, contact a doctor or Poisons Information Centre. Phone Australia 131 126.

Additional User Safety Information: Additional information is listed in the safety data sheet

ENVIRONMENTAL PROTECTION: Studies indicate that when eprinomectin comes in contact with the soil, it readily and tightly binds to the soil and becomes inactive over time. Containers and any residual contents should be disposed of safely in an approved landfill as free eprinomectin may adversely affect fish and certain water-borne organisms. Do not contaminate dams, rivers, streams or other waterways with the chemical or used container.

Disposal: For 250mL and 1L pack sizes: Dispose of container by wrapping with paper and putting in garbage.

For 2.5L, 5L, 11L, 20L, 22.5L, 100L and 200L pack sizes: Triple-rinse container and dispose of rinsate in compliance with relevant local, state or territory government regulations. Do not dispose of undiluted chemicals on-site. If recycling, replace cap and return clean container to recycler or designated collection point. If not recycling, break, crush, or puncture container and deliver to an approved waste management facility. If an approved waste management facility is not available, bury the broken, crushed or punctured container 500mm below the surface in a disposal pit specifically marked and set up for this purpose clear of waterways, vegetation and tree roots, in compliance with relevant local, state or territory government regulations. Do not burn empty containers or product.

Storage: Store below 30°C (room temperature) in the original package. Protect from light. Close container when not in use.

Agro-Alliance Australia Pty Ltd

Address: 2 Mavron Street,
Ashwood VIC 3147, Australia.
info@agroalliance.com.au
Tel: 1300 82 89 88

APVMA NO. 86984/130679

Batch No.

Expiry Date:

